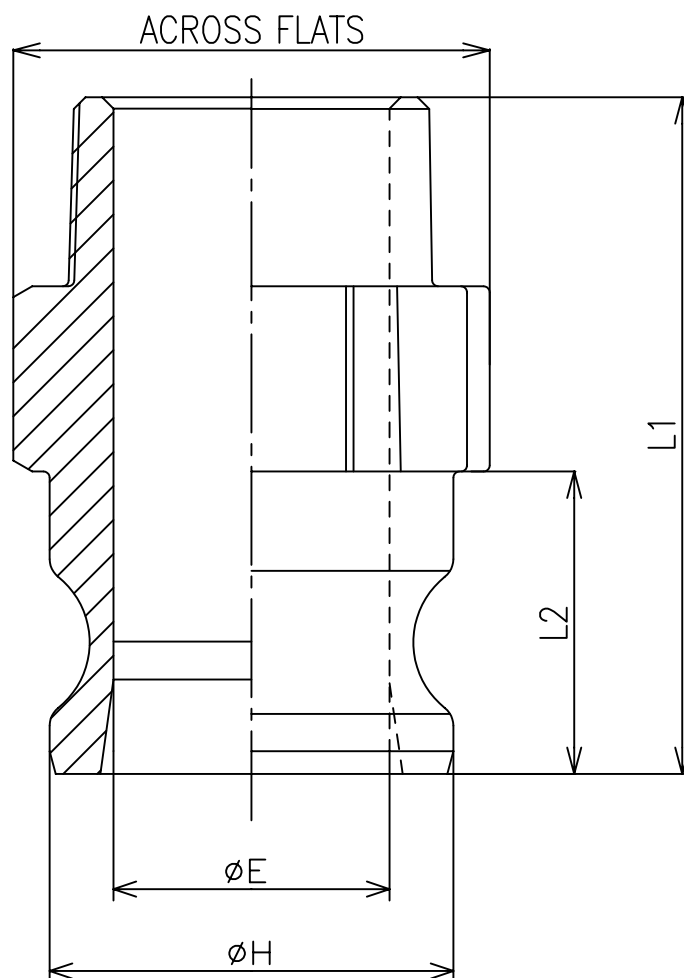
				BILL OF MAT'L				
		ITEM		REQ.		MAT'L	DESCRIPTION	
				WORKING	SPARE			



Dimensional sketch for PP Kamlok-adaptors. 633-FB								
dim.	1/2"	3/4"	1"	1.1/4"	1.1/2"	2"	2.1/2"	3"
E		18	20		35	44		67
A/F		42	51		67	81		108
H		32	37		54	63		92
L1		74	84		92	104		130
L2		28	34		41	48		52
Dimensions in mm.								

TITLE Kamllok adaptor. 633-FB PP	CUSTOMER			NO.
	MAT'L PP	DRAWN	DATE 97,10,16	REFERENCE
株式会社トヨックス	WEIGHT	CHECKED		
	SCALE 1 : 1	APPROVED	DWG. NO.	CDS-P-92 