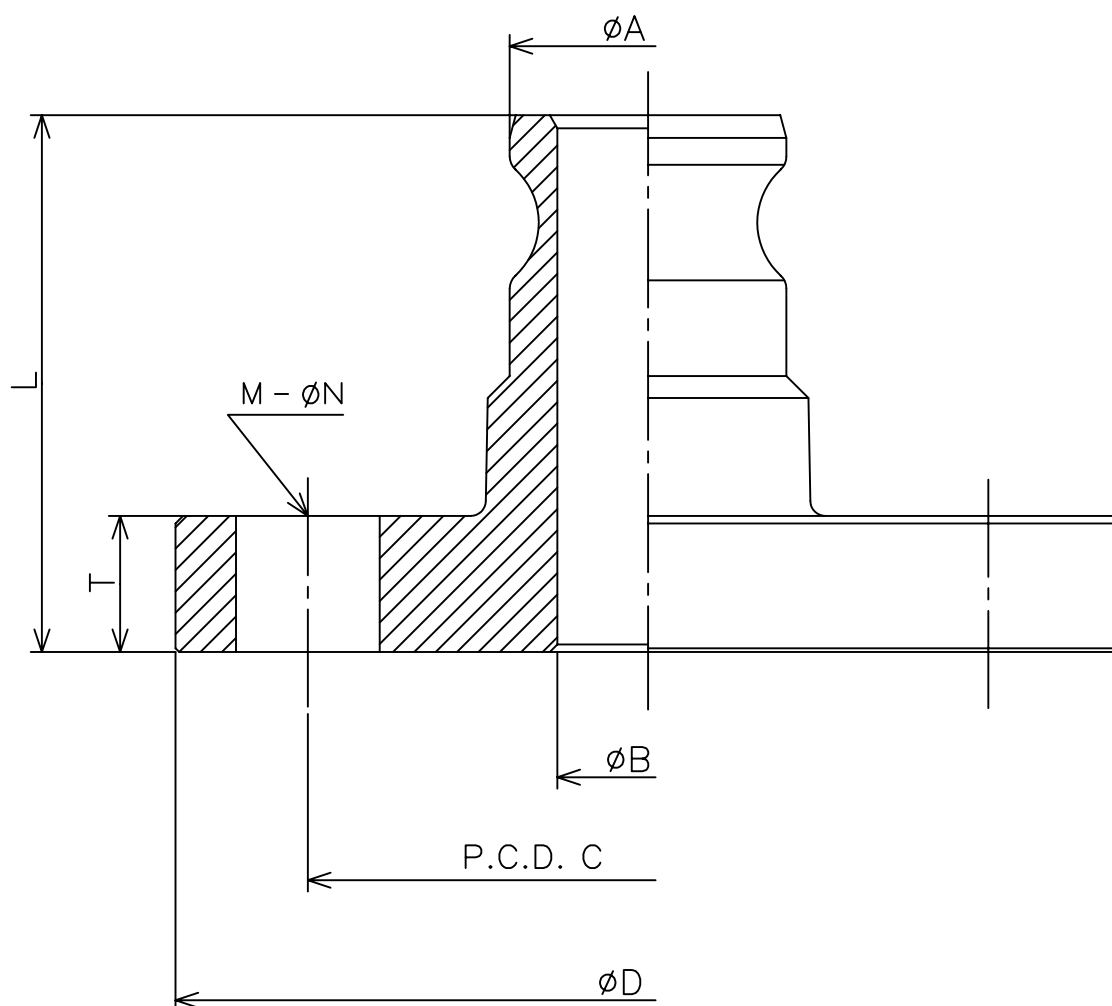


				BILL OF MAT'L			
			ITEM	REQ.		MAT'L	DESCRIPTION
				WORKING	SPARE		



Dimensional sketch for AL/BR Kamlok-adaptors. 633-LAS

dim.	1/2"	3/4"	1"	1.1/4"	1.1/2"	2"	2.1/2"	3"	4"	5"	6"	8"	10"	12"
A		32.0	36.6	45.4	53.4	63.0	75.7	91.4	119.5	145.6	175.9	240.6	291	339.6
B		20	24	29	38	46	54	75	95	120	145	198	250	300
C		75	90	100	105	120	140	150	175	210	240	290	355	400
D		100	125	135	140	155	175	185	210	250	280	330	400	445
T		16	18	18	20	20	22	22	24	24	22	26	24	32
L		58	71	80	77	93	102	97	111	118	109	160	220	167
M		4	4	4	4	4	4	8	8	8	8	12	12	16
N		15	19	19	19	19	19	19	19	23	23	23	25	25
Dimensions in mm.														

TITLE WITH JIS10K FLANGE 633-LAS	CUSTOMER			NO.
	MAT'L AL/BR	DRAWN	DATE 98,01,20	REFERENCE
株式会社トヨックス	WEIGHT	CHECKED		
	SCALE NONE	APPROVED	DWG. NO.	CDS-LAS-80 △