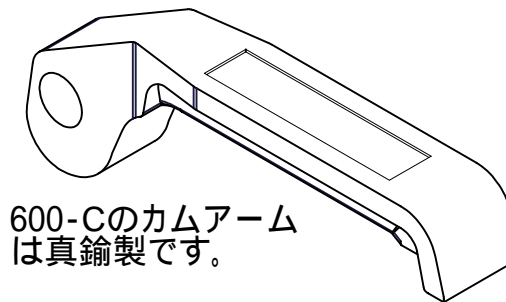
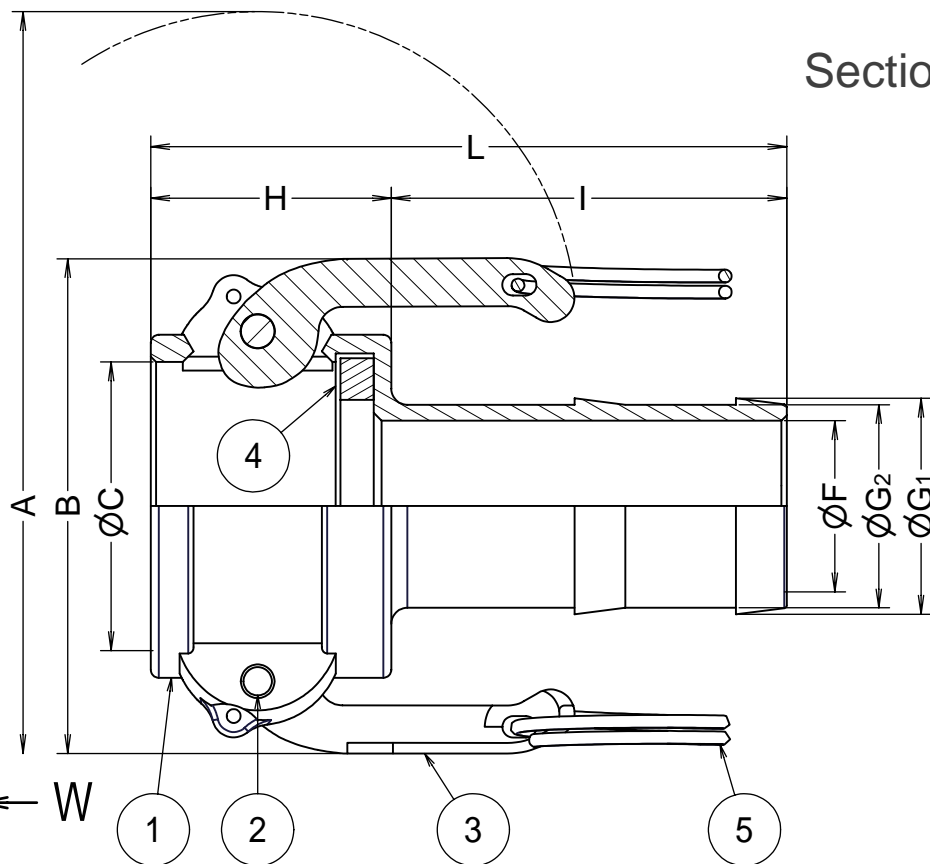


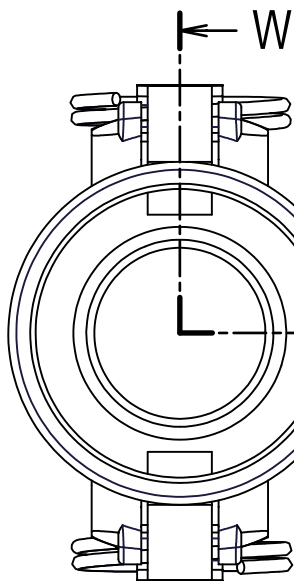
Part No.	75x50-C	75-C	100-C	125-C	150-C	200-C	250-C	300-C	400-C	500-C	600-C	
Size	mm	20x15	20	25	32	40	50	65	80	100	125	150
	inches	0.75x0.5	0.75	1	1.25	1.5	2	2.5	3	4	5	6
A		116	116	126	179	186	196	208	251	280	306	407
B		54	54	61	84	91	101	113	138	166	193	245
ØC		32.4	32.4	37.2	46	54	63.8	76.5	92.2	120.2	146.2	176.5
ØF		7.5	14	20	26	32	43	56	67	92	117	142
ØG ₁		15	21.4	27.2	33.7	40.5	53	67	78	104	129	156
ØG ₂		12	19	25	31	38	50	63.2	74.4	101	126	152
H		34	35	39	45	45	53	55	57	60	62	65
I		37	55	60	61	75	85	93	109	114	123	175
L		71	90	100	106	120	138	148	166	174	185	240
Weight(kg)		0.2	0.26	0.34	0.58	0.7	1.02	1.3	1.9	3.02	□	□


Units:mm

Section W-W



600-Cのカムアームは真鍮製です。



5	リング	SUS304	2	
4	ガスケット	BUNA-N	1	
3	カムアーム	SUS304	2	
2	ピン	SUS304	2	
1	ボディ	SCS14A	1	
ITEM	PART NAME	MATERIAL	Q'TY	REMARKS
CUSTOMER		TITLE		
		MAX-LOK		
		MAX-C ホースシャックカブラー		
DATE	SCALE	DRAW	APPR	
Feb.16'06	none	ToMo		
DWG No.		MAX-C-04SS-06		3
		 FULLNESS JAPAN CORPORATION.		