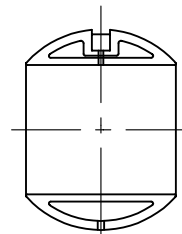
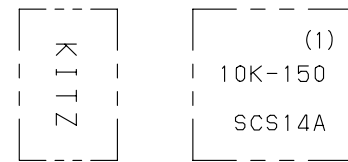


SIZE 250 ONLY



SIZE 200 & OVER



ONE SIDE THE OTHER SIDE
MARKING ON THE BODY

DIMENSIONS

UNIT: mm

NOMINAL SIZE		END FLANGE												APPROX. MASS (kg)		
mm	in.	d	H	D1	L	D	BOLT HOLE		BOLT SIZE	g	t	f	A		B	
							c	NO.								h
125	5	125	312	310	300	250	210	8	23	M20	182	20	2	65.5	165	64
150	6	150	337	310	340	280	240	8	23	M20	212	22	2	65.5	165	85
200	8	200	414	360	450	330	290	12	23	M20	262	22	2	88.5	210	136
250	10	250	477	500	533	400	355	12	25	M22	324	24	2	93.5	363	208

NOTE (1) VALVE SIZE (mm) IDENTIFICATION.

NO	NAME OF PARTS	QTY	MATERIALS	SPECIFICATIONS
				JIS SPEC.
1	BODY	1	STAINLESS STEEL	SCS14A
2	BODY CAP	1	STAINLESS STEEL	SCS14A
3	STEM	1	STAINLESS STEEL	SUS316
4	BALL	1	STAINLESS STEEL	SCS14A
7A	GLAND	1	STAINLESS STEEL	SCS13A
7B	GLAND	1	STAINLESS STEEL	SUS304
8	GLAND PACKING	1S	PTFE	
19	GASKET	1	PTFE	
30	BALL SEAT	2	HYPATITE PTFE	
33	CAP NUT	1S	STAINLESS STEEL	SUS304 (8)
34A	GLAND NUT	1S	STAINLESS STEEL	
34B	NUT	1S	STAINLESS STEEL	
35	CAP BOLT	1S	STAINLESS STEEL	SUS304 (B8)
36	GLAND BOLT	1S	STAINLESS STEEL	
47	THRUST WASHER	1	G/F PTFE	
67	STEM BEARING	1	G/F PTFE	
92	CONNECTOR	1	CARBON STEEL	S45C
93	BRACKET	1	DUCTILE IRON	FCD450-10
99	BOLT	1S	CARBON STEEL	SS400
102	GEAR UNIT	1		
124	SPRING & PIN	1S	STAINLESS STEEL	SUS316-WPA & SUS316
			1S=1 SET	

STANDARD	FACE TO FACE OR END TO END	KITZ STANDARD
	END CONNECTION	JIS B2220 10K
	WALL THICKNESS	ASME B16.34 CLASS 150
	PRESSURE TEST	KITZ STANDARD
	FIGURE	G-10UTBM

10K CAST STAINLESS STEEL
BALL VALVES

ANTI-STATIC DEVICE, FULL BORE, GEAR TYPE, FLANGED ENDS.

DATE APPD	JUL. 21. '09	DRAWING NO	△		
APPD BY	S. SANADA	965-A20048	△		
CHKD BY	Y. ASAKAWA		△		
DSGND BY	S. KAJI		△		
DRAWD BY	Y. NAKAYAMA		REV-06	MARK	DATE

KITZ CORPORATION

KITZ