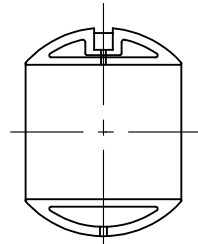
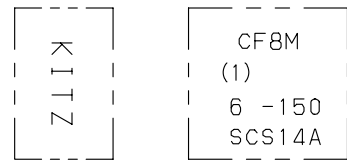


SIZE 10 ONLY



SIZE 8 & OVER



ONE SIDE THE OTHER SIDE
MARKING ON THE BODY

DIMENSIONS

UNIT: mm

NOMINAL SIZE		END FLANGE														APPROX. MASS (kg)
in.	mm	d	H	D1	L	D	BOLT HOLE			BOLT SIZE	g	t	f	A	B	
							c	NO.	h							
5	125	125	312	310	356	254	216	8	22	3/4	186	23.9	1.6	65.5	165	68
6	150	150	337	310	394	279	241.5	8	22	3/4	216	25.4	1.6	65.5	165	92
8	200	200	414	360	457	343	298.5	8	22	3/4	270	28.6	1.6	88.5	210	145
10	250	250	477	500	533	406	362	12	25	7/8	324	30.2	1.6	93.5	363	211

KITZ

NOTE (1) VALVE SIZE (inch) IDENTIFICATION. (2) SIZE 10 ONLY.

NO	NAME OF PARTS	QTY	MATERIALS	SPECIFICATIONS
				JIS SPEC.
1	BODY	1	STAINLESS STEEL	SCS14A
2	BODY CAP	1	STAINLESS STEEL	SCS14A
3	STEM	1	STAINLESS STEEL	SUS316
4	BALL	1	STAINLESS STEEL	SCS14A
7A	GLAND	1	STAINLESS STEEL	SCS13A
7B	GLAND	1	STAINLESS STEEL	SUS304
8	GLAND PACKING	1S	PTFE	
16A	NAME PLATE	1	ALUMINUM	A1050P
16B	WASHER	1	CARBON STEEL	SS400
19	GASKET	1	PTFE	
30	BALL SEAT	2	HYPATITE PTFE	
33	CAP NUT	1S	STAINLESS STEEL	SUS304 (8)
34A	GLAND NUT	1S	STAINLESS STEEL	
34B	NUT	1S	STAINLESS STEEL	
35	CAP BOLT	1S	STAINLESS STEEL	SUS304 (B8)
36	GLAND BOLT	1S	STAINLESS STEEL	
47	THRUST WASHER	1	G/F PTFE	
67	STEM BEARING	1	G/F PTFE	
92	CONNECTOR	1	CARBON STEEL	S45C
93	BRACKET	1	DUCTILE IRON	FCD450-10
99	BOLT	1S	CARBON STEEL	SS400
102	GEAR UNIT	1		
124	SPRING & PIN	1S	STAINLESS STEEL	SUS316-WPA & SUS316

1S=1 SET

STANDARD	FACE TO FACE OR END TO END	ASME B16.10 CLASS 150
	END CONNECTION	ASME B16.5 CLASS 150
	WALL THICKNESS	ASME B16.34 CLASS 150
	PRESSURE TEST	API 598

FIGURE

G-150UTBM

CLASS 150 CAST STAINLESS STEEL
BALL VALVES

ANTI-STATIC DEVICE, FULL BORE, GEAR TYPE, FLANGED ENDS.

DATE APPD	JUL. 21.' 09	DRAWING NO	△		
APPD BY	S. SANADA	965-B10030 REV-05	△		
CHKD BY	Y. ASAKAWA		△		
DSGND BY	S. KAJI		△		
DRAWD BY	Y. NAKAYAMA		MARK	DATE	BY

KITZ CORPORATION