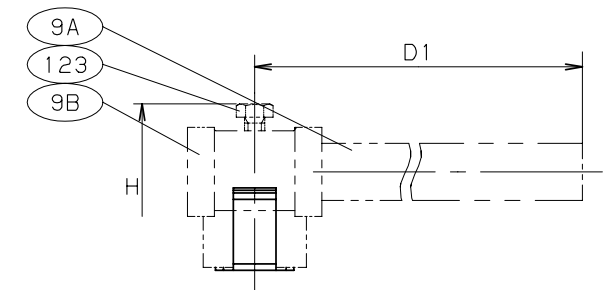
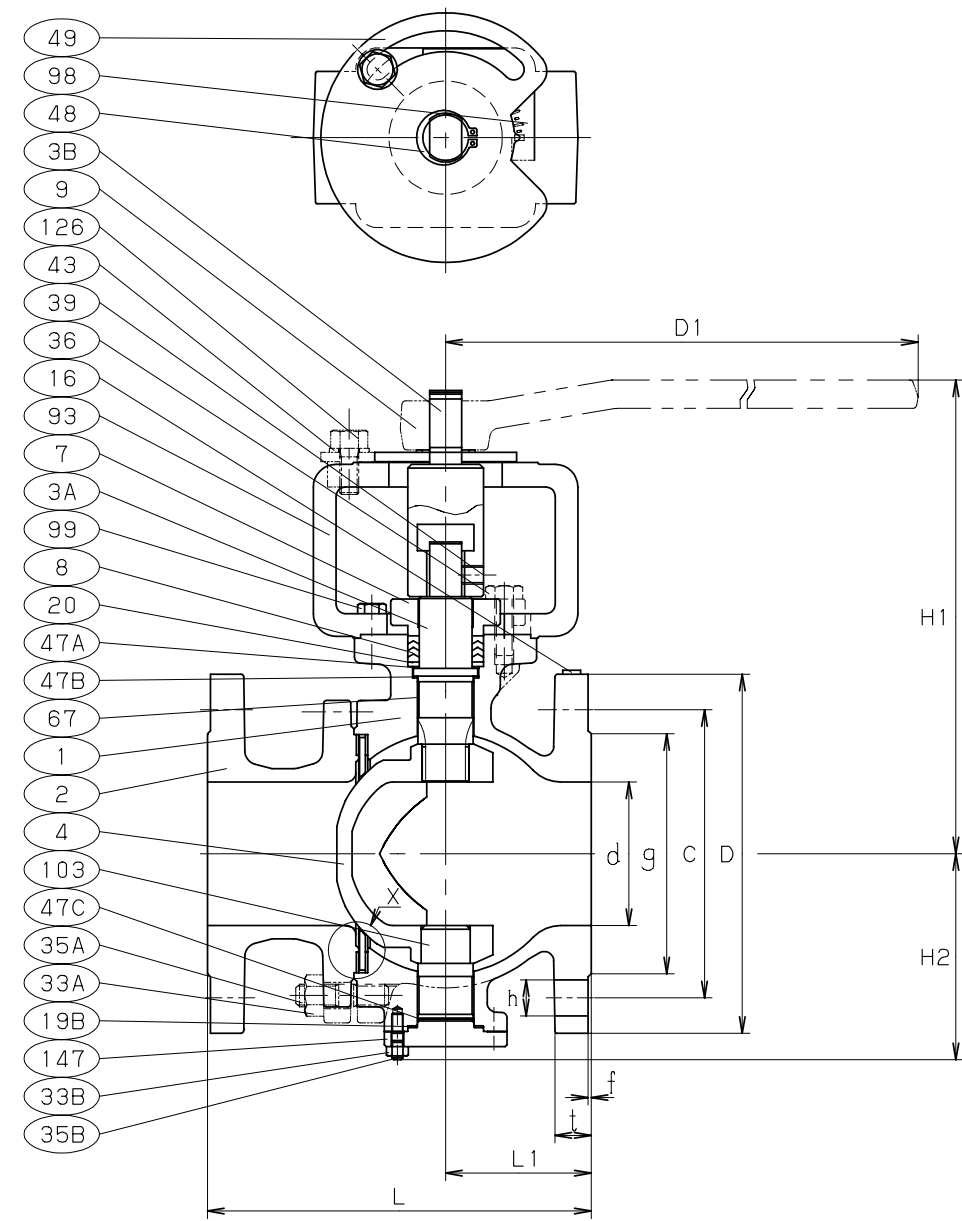
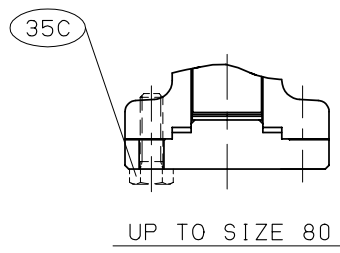


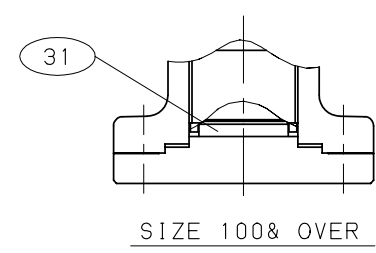
1S=1 SET



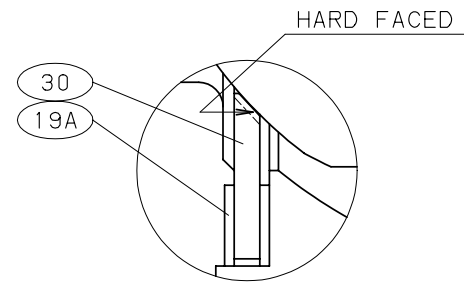
SIZE 150& OVER



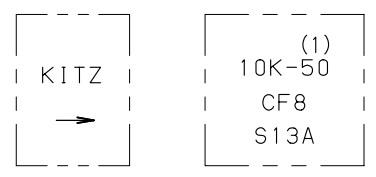
UP TO SIZE 80



SIZE 100& OVER



DETAIL X



ONE SIDE THE OTHER SIDE MARKING ON THE BODY

DIMENSIONS UNIT:mm

NOMINAL SIZE		d	H1	H2	D1	L	L1	END FLANGE							
								D	BOLT HOLE		BOLT SIZE	g	(2)		f
mm	in.	c	NO.	h	t										
25	1	25	181	68.5	160	127	48	125	90	4	19	M16	67	14	1
40	1.1/2	38	199	76	230	165	67	140	105	4	19	M16	81	16	2
50	2	51	205	84.5	230	178	69	155	120	4	19	M16	96	16	2
65	2.1/2	64	252	97	400	190	76	175	140	4	19	M16	116	18	2
80	3	76	259	106	400	203	77	185	150	8	19	M16	126	19.1	2
100	4	102	292	133.5	460	229	89	210	175	8	19	M16	151	23.9	2
125	5	127	314.5	157	460	356	158	250	210	8	23	M20	182	23.9	2
150	6	152	411	182	1000	394	197	280	240	8	23	M20	212	25.4	2
200	8	203	483	226.5	1500	457	228.5	330	290	12	23	M20	262	28.6	2

NOTE (1) VALVE SIZE (mm) IDENTIFICATION.
 (2) "t" SHALL BE IN ACCORDANCE WITH ASME B16.5 CLASS 150, EXCEPT FOR SIZE 25-65.
 (3) ALLOWABLE SEAT LEAKAGE SHALL BE IN ACCORDANCE WITH ANSI/FCI 70-2 CLASS I.
 (4) Co-Cr-W ALLOY.
 (5) Cr PLATING.



NO	NAME OF PARTS	QTY	MATERIALS	SPECIFICATIONS
				JIS SPEC.
1	BODY	1	STAINLESS STEEL	SCS13A
2	BODY CAP	1	STAINLESS STEEL	SCS13A
3A	STEM	1	STAINLESS STEEL	SUS316
3B	EXT. STEM	1	CARBON STEEL	SS400
4	DISC	1	STAINLESS STEEL	SCS14A (5)
7	GLAND	1	STAINLESS STEEL	SCS13A
8	GLAND PACKING	1S	PTFE	
9	HANDLE	1	DUCTILE IRON	FCD400
9A	HANDLE BAR	1	CARBON STEEL	SGP
9B	HANDLE HEAD	1	DUCTILE IRON	FCD400
16	NAME PLATE	1	STAINLESS STEEL	SUS304
19A	SEAT GASKET	2	NON-ASBESTOS SHEET	
19B	GASKET	1	NON-ASBESTOS SHEET	
20	PACKING WASHER	1	STAINLESS STEEL	SUS316
30	SEAT	1	STAINLESS STEEL	SUS316+HF (4)
31	STEM WASHER	1	STAINLESS STEEL	SUS316
33A	CAP NUT	1S	STAINLESS STEEL	SUS304 (8)
33B	COVER NUT	1S	STAINLESS STEEL	SUS304 (8)
				(SIZE 100& OVER)
35A	CAP BOLT	1S	STAINLESS STEEL	SUS304 (B8)
35B	COVER BOLT	1S	STAINLESS STEEL	SUS304 (B8)
				(SIZE 100& OVER)
35C	COVER BOLT	1S	STAINLESS STEEL	SUS304 (B8)
				(UP TO SIZE 80)
36	GLAND BOLT	1S	STAINLESS STEEL	
39	SET SCREW	1	ALLOY STEEL	SCM435
43	WASHER	1	STAINLESS STEEL	SUS304-CSP
47A	THRUST WASHER	1	G/F PTFE	
47B	THRUST WASHER	1	G/F PTFE	
47C	THRUST WASHER	1	G/F PTFE	
48	SNAP RING	1	STAINLESS STEEL	SUS304
49	STOPPER	1	CARBON STEEL	S45C
67	STEM BEARING	2	METAL BACKED PTFE	
93	BRACKET	1	CARBON STEEL	STKR400
				(UP TO SIZE 125)
			DUCTILE IRON	FCD400
				(SIZE 150& OVER)
98	INDICATOR PLATE	1	STAINLESS STEEL	SUS304
99	SET BOLT	1S	CARBON STEEL	SS400
103	BOTTOM STEM	1	STAINLESS STEEL	SUS316
123	HANDLE BOLT	1	CARBON STEEL	
126	STOPPER BOLT	1	STAINLESS STEEL	
147	END PLATE	1	STAINLESS STEEL	SUS304

STANDARD	FACE TO FACE OR END TO END	ASME B16.10	CLASS 150
	END CONNECTION	JIS B2220	10K
	WALL THICKNESS	ASME B16.34	CLASS 150
	PRESSURE TEST	KITZ STANDARD	
FIGURE		L-10UVCT	

10K CAST STAINLESS STEEL
 A PORT VALVES

FULL BORE, FLANGED ENDS.

DATE APPD	JAN.05.'09	DRAWING NO		△		
APPD BY	S. SANADA	965-A20085	REV-07	△		
CHKD BY	Y. ASAKAWA			△		
DSGND BY	Y. YAMASHITA			△		
DRAWN BY	E. MITSUI			△		
				MARK	DATE	BY

KITZ CORPORATION